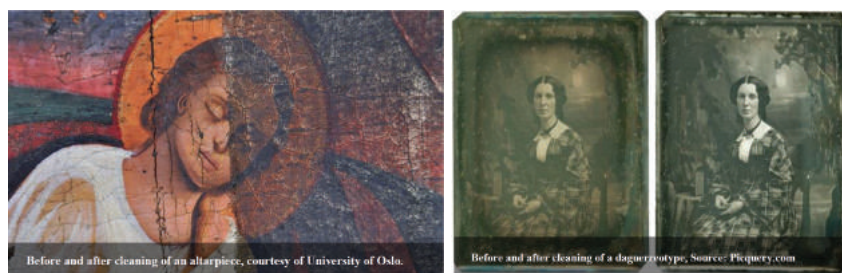




CHANGE

CULTURAL HERITAGE ANALYSIS FOR NEW GENERATIONS



The CHANGE project will train a next generation of researchers to develop methodologies for the assessment of changes in Cultural Heritage objects.

Marie Skłodowska-Curie Actions — Innovative Training Networks (ITN) 2019-2023

15 PhD positions available!

- ESR1: Imaging techniques for change documentation and monitoring of challenging cultural heritage materials. (NTNU)
- ESR2: Quality evaluation in cultural heritage digitization. (NTNU)
- ESR3: Registration techniques for differential and multi modal data. (NTNU)
- ESR4: Analysis and visualization of multi modal image data in cultural heritage surfaces monitoring. (WUT)
- ESR5: Portable multi modal device(s) for surface measurement/monitoring. (WUT)
- ESR6: Development of multi modal image data fusion methods for change monitoring. (C2RMF)
- ESR7: Small scale 3D scanning and printing in cultural heritage. (C2RMF)
- ESR8: Capture and characterization of change in the appearance of cultural heritage objects surface. (UBFC)
- ESR9: Appearance change assessment: link between local geometry and global appearance descriptors. (UBFC)
- ESR10: Imaging-based documentation and analysis for change monitoring of novel dry-cleaning restoration/conservation methods for unvarnished canvas paintings. (UiO)
- ESR11: Analysis and assessment of degradation of polychrome artworks. (HES-SO)
- ESR12: Analysis and monitoring of degradation of ancient glasses. (SNM)
- ESR13: Monitoring of the surface appearance of daguerreotypes during their first tarnishing, electrolytic cleaning and possible re-tarnishing after treatment. (UvA)
- ESR14: Enrichment of 3D volumetric data with metadata and semantics. (CUT)
- ESR15: Use of imaging techniques to characterize and monitor the surface of historical oxidized, patinated and varnished metals. (HES-SO)



Scan me

More information <http://www.change-itn.eu>